



## PlusPRO 4 Series Rack/Tower

**ON-LINE UPS**

**1000VA / 2000VA / 3000VA**  
**(100/110/120/125Vac)**

## PlusPRO 4 Series



1000VA/900W



2000VA/1800W



3000VA/2700W

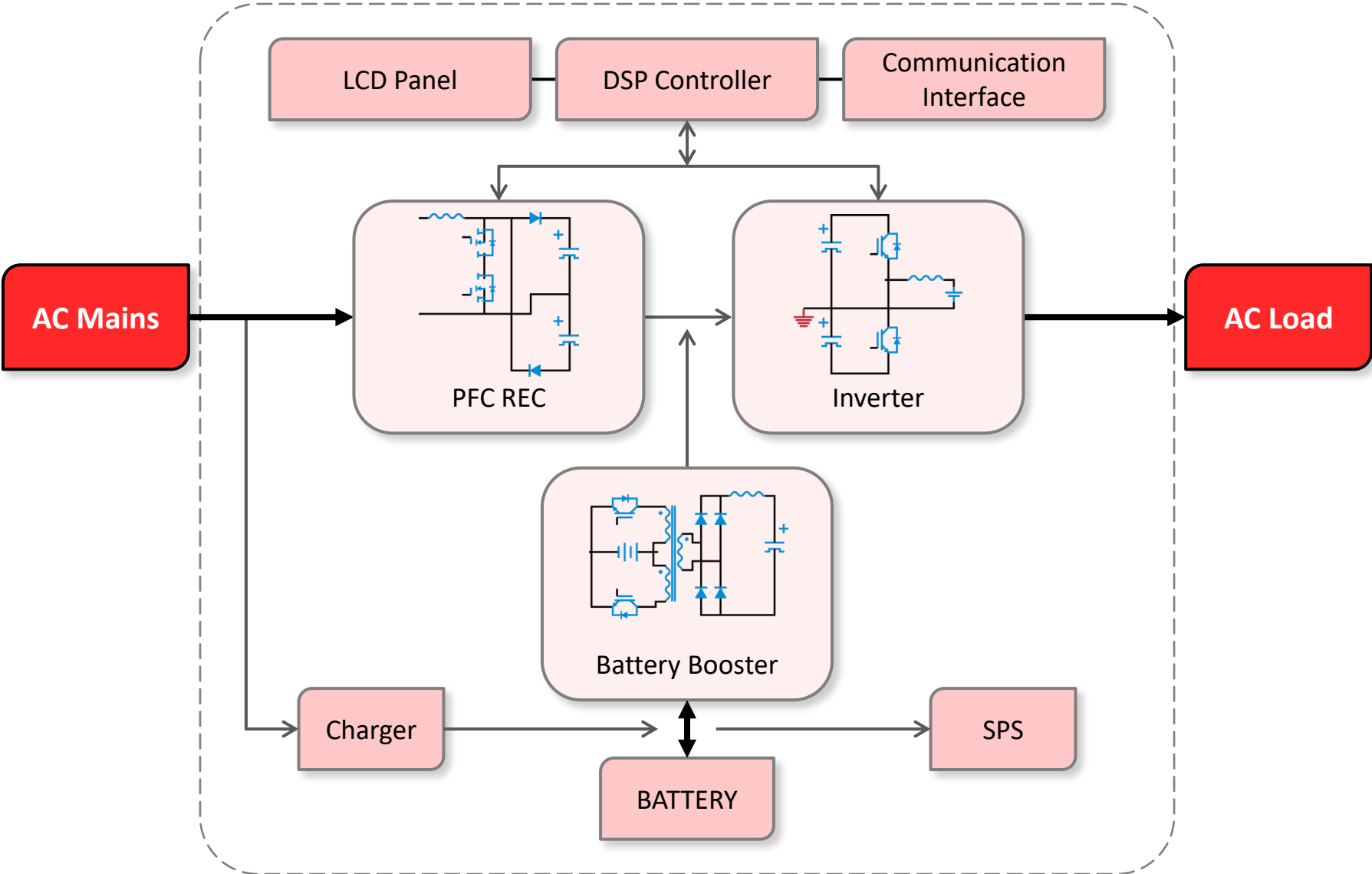
# Product Introduction

**PlusPRO 4 LV series** 1000VA to 3000VA is a true double conversion online UPS with **pure sinewave** output and **zero transfer time** in a **rack and tower** convertible unit.

Featuring 1000VA, 2000VA, 3000VA configuration with wide input range **55VAC to 145VAC**, **output power factor 0.9**, **LCD display**, PlusPRO 4 series stand out as high efficient line of online UPS for mission critical equipment in data/computer center or industrial applications.

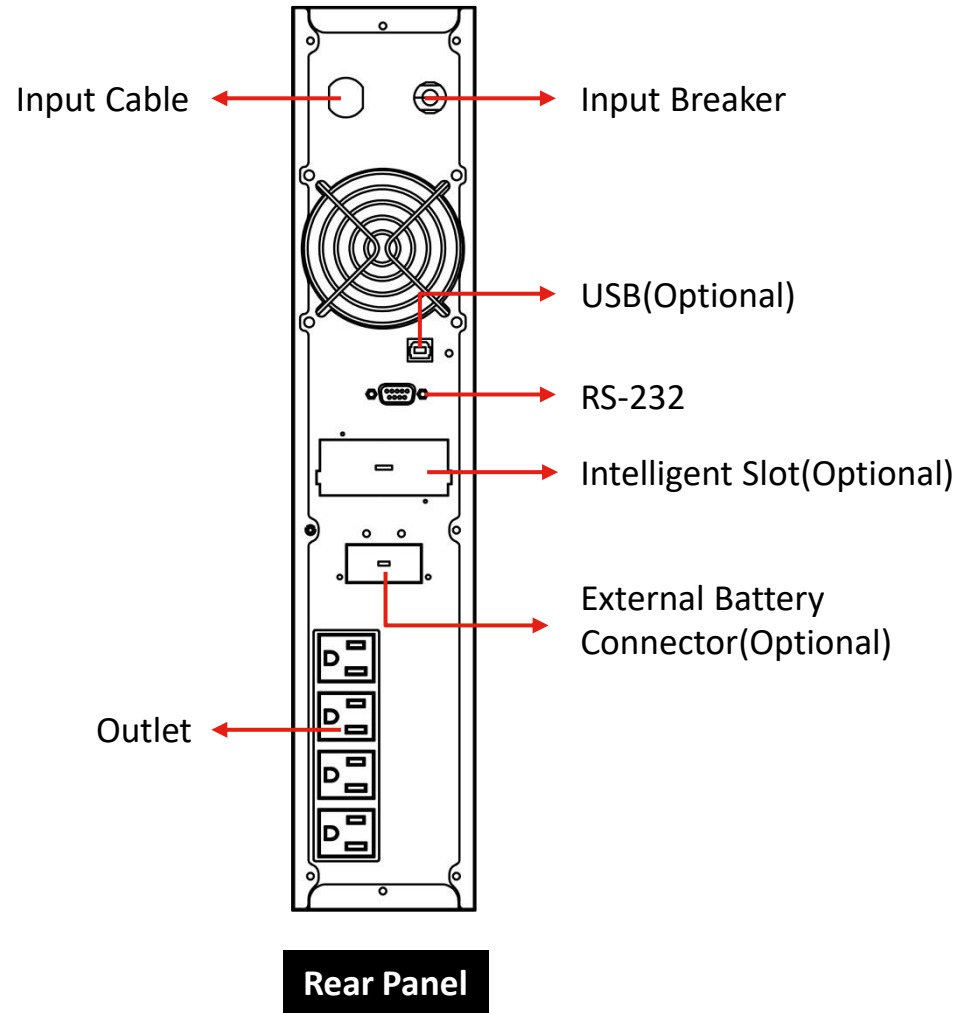


# Basic Functional Module and Power Topology



# Structural Diagram – PlusPRO 4-1000

1000VA/900W

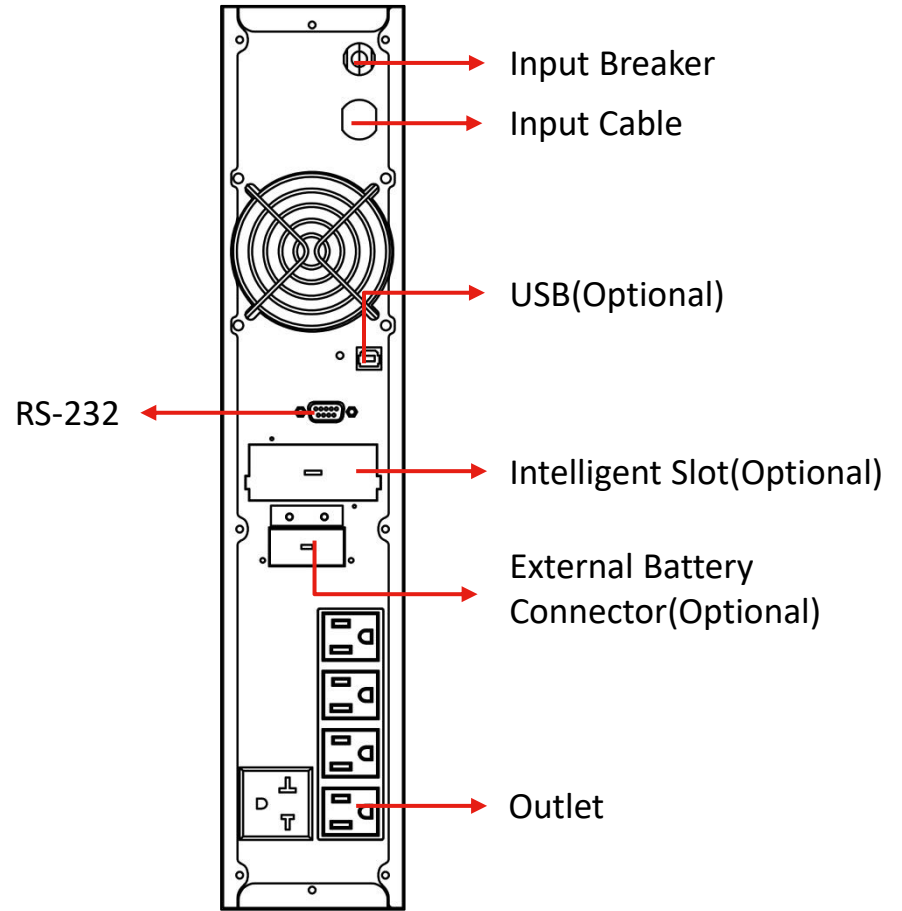


# Structural Diagram – PlusPRO 4-2000

2000VA/1800W



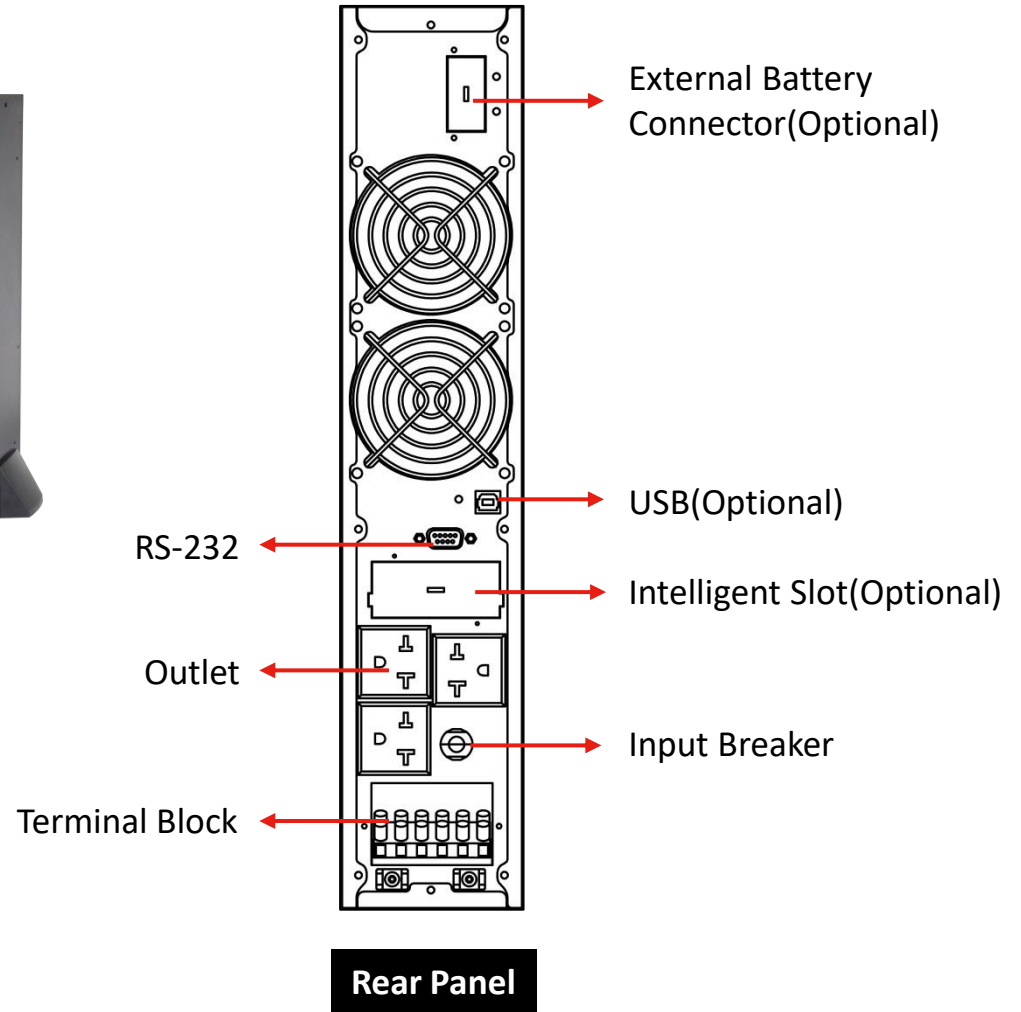
**Front Panel**



**Rear Panel**

# Structural Diagram – PlusPRO 4-3000

3000VA/2700W



# Accessories

**Mounting Bracket**



**Handle**



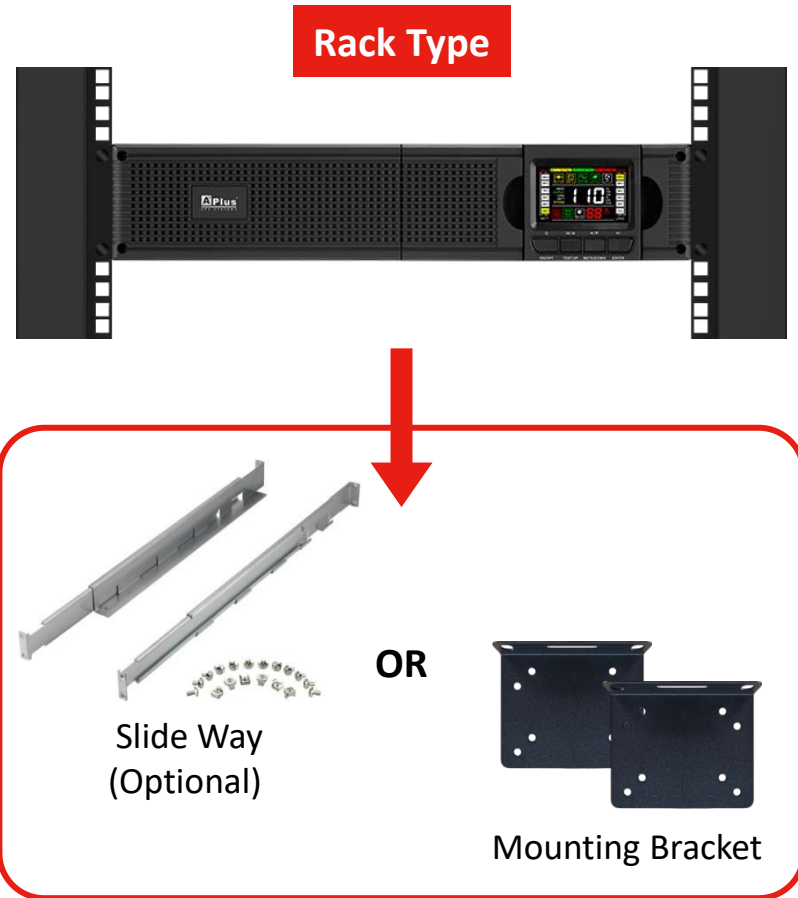
**Slide Way (Optional)**



**Stabilizing Feet**



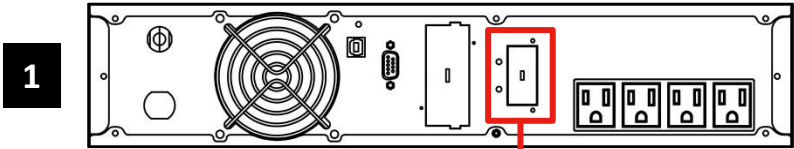
# Tower/Rack Convertible



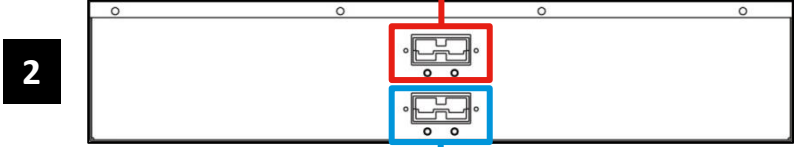
# External Battery Bank



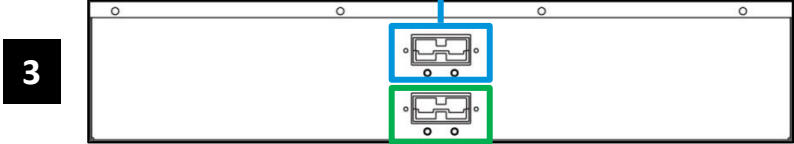
Main UPS Box



Battery Bank Box-1



Battery Bank Box-2



N

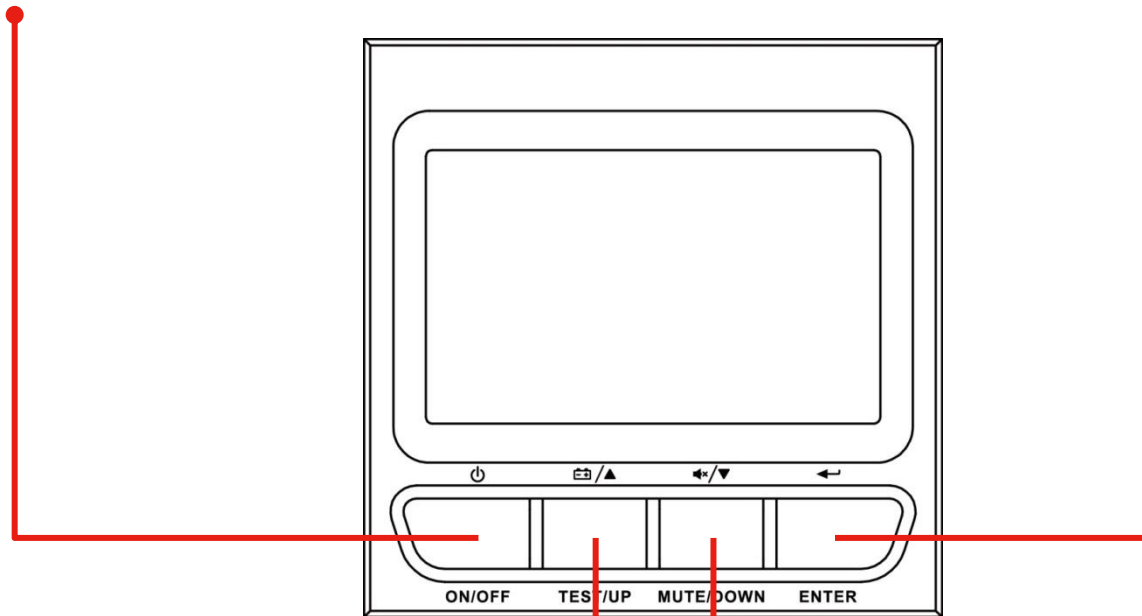
# Button Information

## ON/OFF-Button

By pressing this Button, the UPS system can be turned on or turned off.

## ENTER-Button

Enter button is used to enter setting mode and confirm change of the setting.



## TEST/UP-Button

The Up Page Button is used to switch the display the LCD display information, and activate the battery self-test function.

## MUTE/DOWN-Button

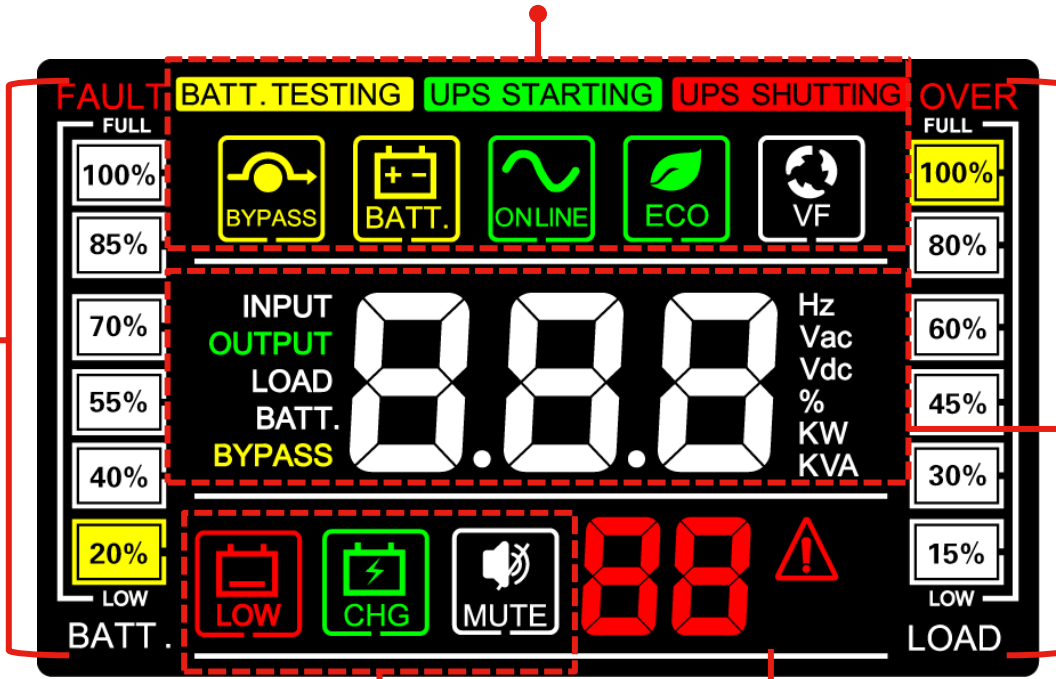
The Down Page Button can also be used to switch the display the LCD display information, and muted/recover the buzzer alarm function.

# LCD with Color Display

Battery Information

Mode Operation Information

Load Information



Mode Operation Information

Fault Information

Input/Output Information

## Features



Comprehensive LCD display shows detailed information of UPS status



High performance true double conversion On Line UPS 1-3KVA



Microprocessor control guarantees high reliability



High efficiency mode (ECO mode)



High efficiency mode (Line mode)



Rack/tower convertible design



Emergency Battery Back-up



Output power factor 0.9



19-inch rack mount case



Pure Sine wave Output



Modular design

# Specifications -1

MODEL		PlusPRO 4-1000	PlusPRO 4-2000	PlusPRO 4-3000
<b>CAPACITY</b>		1KVA/0.9KW	2KVA/1.8KW	3KVA/2.7KW
<b>INPUT</b>	Voltage	110/115/120/125VAC, Default 120VAC		
	Voltage Range	55Vac-145Vac		
	Frequency	40-70Hz		
	Input Wiring	Single Phase with Ground		
<b>OUTPUT</b>	Output Power Factor	0.9		
	Nominal Output Voltage	110/115/120/125VAC, Default 120VAC		
	Voltage Regulation	+/-1%		
	Frequency Range	50/60Hz +/-0.05Hz(Battery Mode)		
	Overload	100%-105% continuous. 60Sec. @105%-130% Rated Load		
	Voltage Distortion(THDv)	<2% @linear load		
	Output Waveform	Pure Sine Wave		
	Parallel Operation	N/A		
<b>EFFICIENCY</b>	Inverter Mode	88%	89%	90%
<b>BATTERY</b>	Battery Type	VRLA		
	Battery	12V/7AH*2 or 12V/9AH*2	12V/7AH*4 or 12V/9AH*4	12V/7AH*6 or 12V/9AH*6
	Rated Battery Voltage	24VDC	48VDC	72VDC

\*Product specifications are subject to change without further notice.

## Specifications -2

MODEL		PlusPRO 4-1000	PlusPRO 4-2000	PlusPRO 4-3000
<b>BATTERY</b>	Charging Current	1A		
	Recharging time(90%)	5 hours		
<b>TRANSFER TIME</b>	Battery <--> Inverter	0ms		
	Inverter <--> Bypass	<4ms		
	ECO <--> Battery	<10ms		
<b>DISPLAY</b>		Segment LCD		
<b>AUDIBLE ALARM</b>		Yes		
<b>PHYSICAL</b>	Format	Tower/Rack: 2U		
	Dimension(D*W*H)(mm)	355*440*88(2U)	503*440*88(2U)	568*440*88(2U)
<b>ENVIRONMENT</b>	Operating Temperature	0-40°C		
	Regulation	cTUVus, FCC		
	Noise Level	<55dB		
<b>INTERFACE</b>	RS-232	Yes		
	USB	Optional		
	Intelligent Slot	Optional (Pptional NMC Card/CMC Modbus Card/AS400 Card )		

\*Product specifications are subject to change without further notice.



**APLUS POWER CORP.**

Aplus, Reliable Power Brand Deserve Your Trust